



# 40K CAVITATION 5IN1

RF+VACUUM+CAVITATION  
+LASER PADS SLIMMING MACHING

START



# Advantage



## Advantage

- **portable**

5 in 1 salon beauty system  
saving shipping cost

5 handles

for slimming, skin tightening, wrinkle removal

- **Advantage**

high power cavitation 300W more effective

vacuum head help a lot for supus fat cell

2 years warranty

multi-color for option







## Cavitation

Frequency:4Mhz

Power:150W

Burning explode fat cell



## Monopolar RF

Frequency:40khz

Power:300W

Body shape fat reduction



## Big tripolar RF

Frequency:4Mhz

Power:150W

Skin tightening lifting wrinkle removal



## Small Tripolar RF

Frequency:1Mhz

Power:150W

Skin tightening lifting wrinkle removal



## Vacuum

Frequency:1MHz

Pressure:-90kpa

Slimming Remove surplus fat cell

Artikel	KavitationVakuumRF-Schlankheitsmaschine
TFT-LCD-Display	8-Zoll-Farb-Touchscreen
Technologie	KavitationVakuumRF (monopolare RFtripolare RF) Ultraschall-HF-Kavitationsmaschinenkopf Vakuum-Fettabsaugkopf
Handstücke	Monopolarer HF-Kopf Tripolarer HF-Kopf (groß) Tripolarer HF-Kopf (klein)
Kavitationsfrequenz	40 kHz
Maximale Kavitationsleistung	300w
Tripolare RF	1-10 MHz (Ausgangsfrequenz) 150 Watt (maximale Ausgangsleistung)

Monopilares HF	1-10 MHz (Ausgangsfrequenz) 150 Watt (maximale Ausgangsleistung)
Vakuumdruck	100 KPA
Größe	Maschinengröße: 47*31*38 cm Packmaß des Aluminiumkoffers: 54*43*46cm
Stromspannung	220 V Wechselstrom/110 V Wechselstrom
N.W.	15 kg
G.W.	25 kg

### Treatment before & after compare

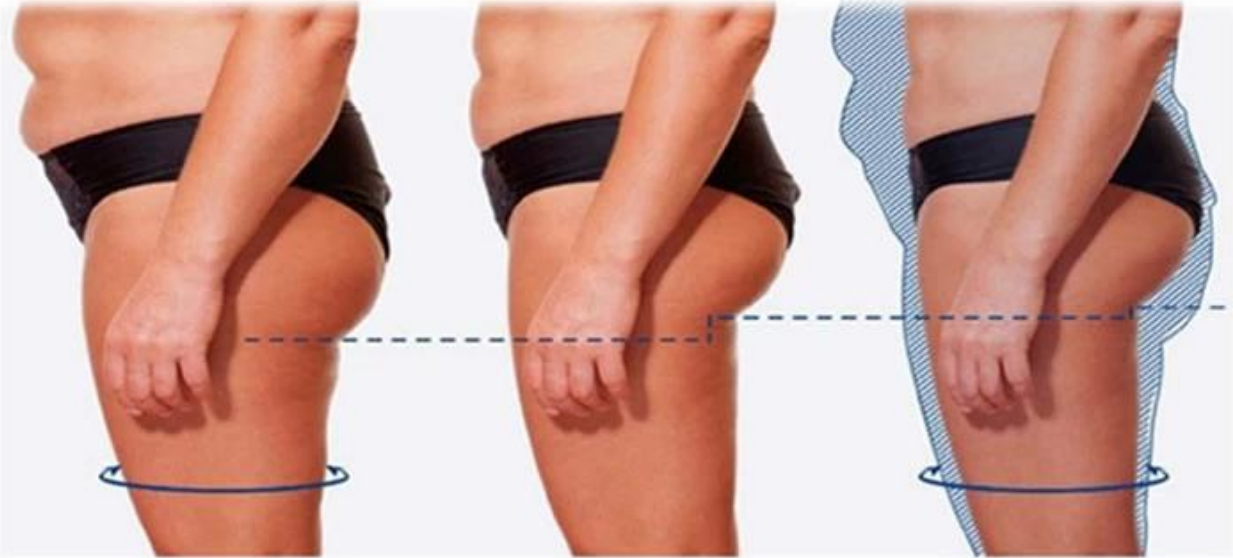


### Anwendung und Behandlungseffekt:

- > Suitable for 6 different color skin, including the dark skin.
- > The sapphire temperature cools down 0~3°C, clients feel comfortable and painless in whole treatment.
- > Long continuous working time, ensure the works in Clinic/salon use.

# AMAZING EFFECT

Before & After



Before

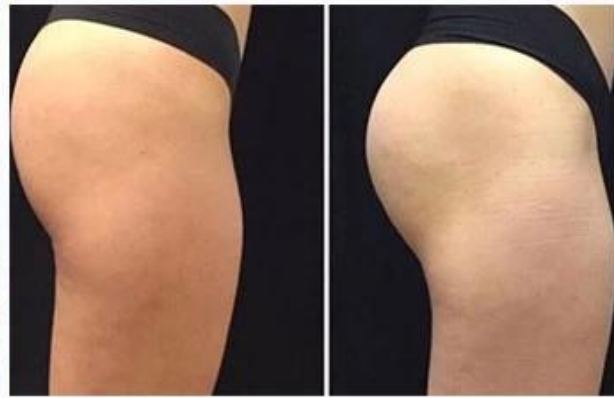
Five weeks later

Eight weeks later



Before

After



Before

After



Before

After



Before

After



# Free logo service



**[Sofort konsultieren!](#)**