

## Advantages

### 1.3waves



## Large Spot Size

### Quick and Comfortable

With large spot size of  $1.2 \times 3.5 \text{cm}^2$ , for faster treatments and better patient experience.



## TEC Plus

### Continuous Contact Cooling

TEC is an advanced technology that continuously cools skin and facilitates range-controlled temperature throughout the entire treatment. Patients can now enjoy a completely pain-free, cool and comfortable experience throughout the session.

## Handle

- \* Imported gold laser bar, Shots up to 40 million
- \* 10bar **1000W**, 12 bar **1200W** and 16 bar **1600W** high power options\* Spot size 12\*20mm, 15\*25mm, 12\*38mm for option
- \* 450g handle, light weight, free quick slide treatment
- \* With indicator light, to show working condition(on machine & handle), safely use

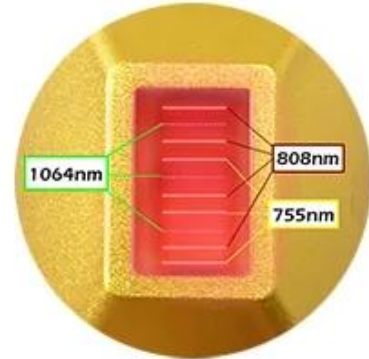
# Handle Details

Three Wavelengths Work Togher



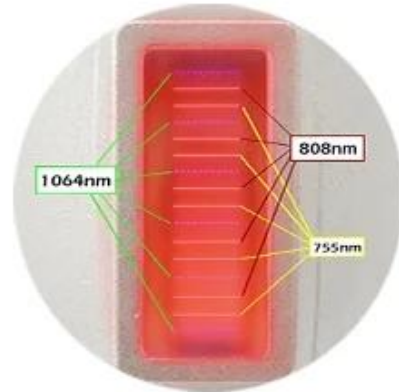
**12\*20nm**

755nm Laser  
808nm Laser  
1064nm Laser



**12\*35nm**

755nm Laser  
808nm Laser  
1064nm Laser



## Safe Use On All Skin Type

Alex 755nm for **light skin**

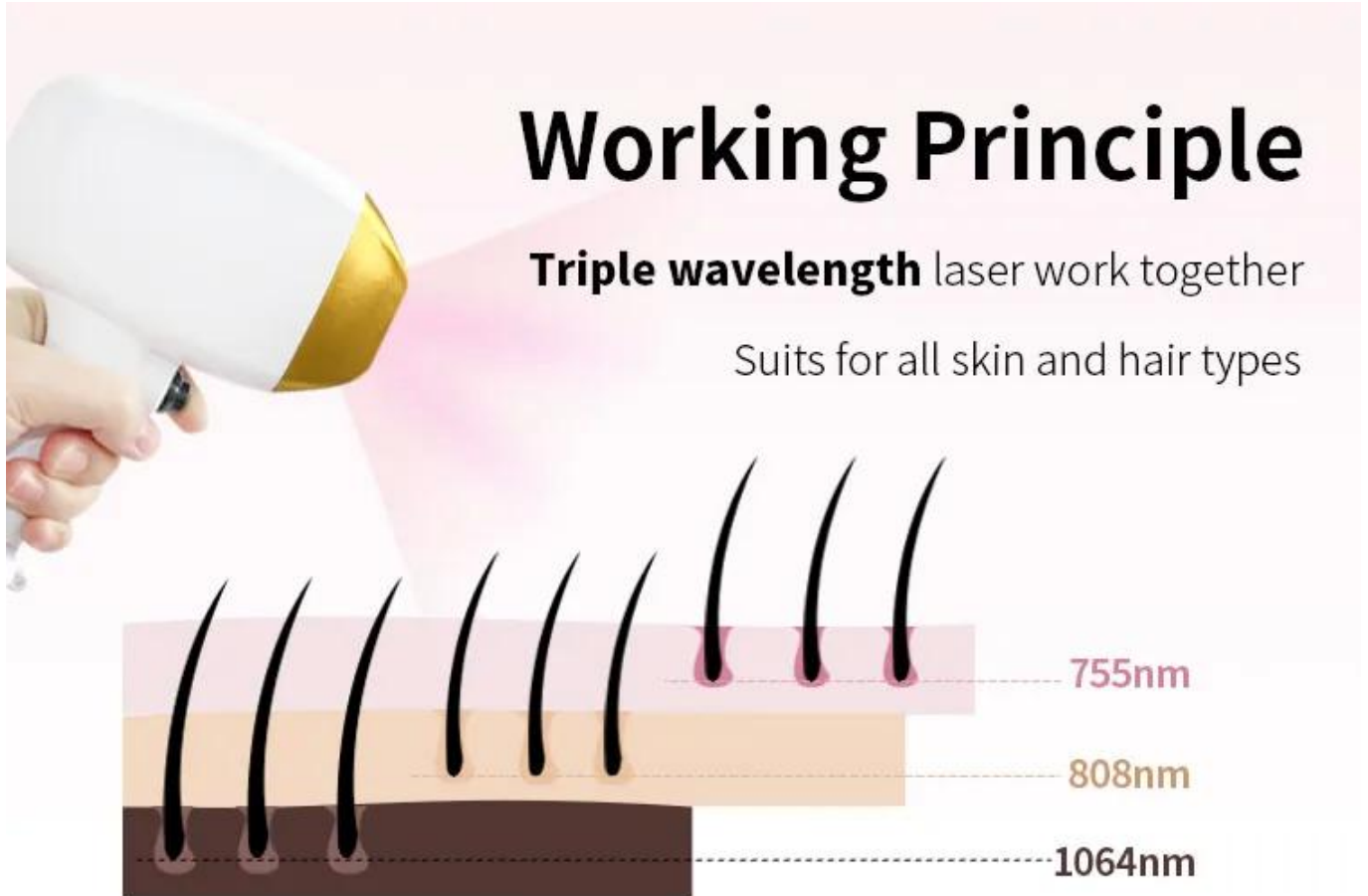
Speed Diode 808nm for **yellow skin**

Long Pulse 1064nm for **darker skin**

# Working Principle

**Triple wavelength** laser work together

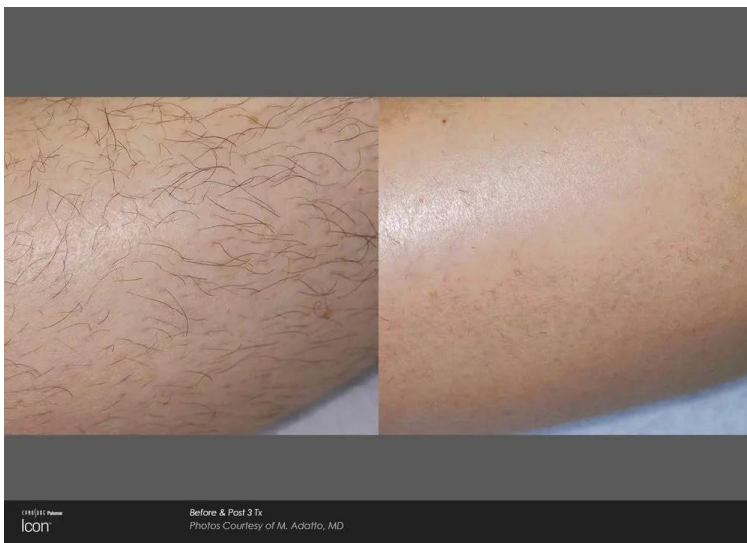
Suits for all skin and hair types

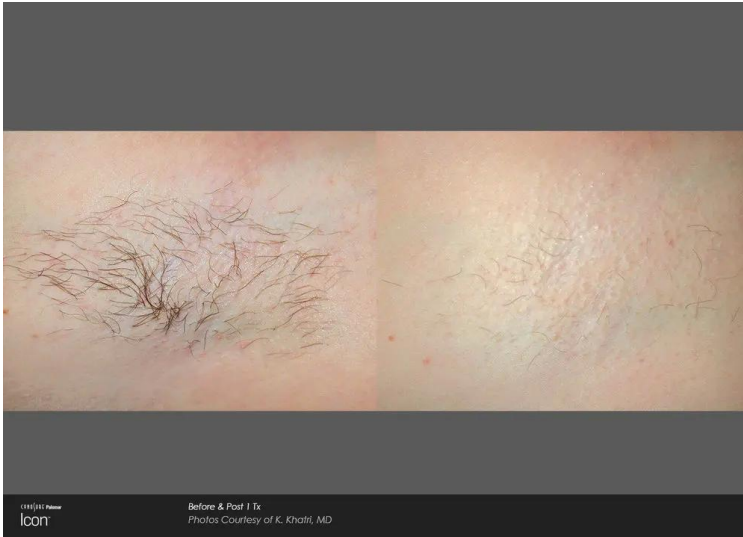


- **755nm for white skin** (fine, golden hair removal )
- **808nm for yellow neutral skin** (brown hair removal)
- **1064nm for black skin** (black hair removal)

**Treatment effect**

---





## Machine Program

1. 12.4 inch big screen, quick touch
2. Male & femal, 6 body parts, 6 skin types setting smart software
3. 6 language options, your native language can be added
4. Free OEM program service(logo/system...)

E  
a  
s  
e  
n  
t  
i  
c  
e  
a  
h  
a  
i  
r  
r  
e  
m  
o  
v  
a  
l  
m  
a  
c  
h  
i  
n  
e

G  
e  
r  
m  
a  
n  
y  
/  
U  
S  
A  
i  
m  
p  
o  
r  
t  
e  
d  
,  
8  
b  
a  
r  
,  
1  
b  
a  
r  
,  
1  
2  
b  
a  
r  
s  
,  
1  
6  
b  
a  
r  
s

7  
5  
5  
n  
m  
8  
8  
n  
m  
1  
6  
4  
n  
m  
  
1  
W  
+  
1  
6  
W  
o  
w  
e  
r  
&