

□□□□□□

*.3 1064 nm 808nm 755nm, □□□□ □□□□ □□□ 1-□ 3-□ □□□□□□ □□□□

1000 □□ □□□□ □□□□ :□□□□ □□□□W/1200W/1600W □□□□□□□□□□

□"□ 35*12 ,□"□ 20*12 □□□□ □□□□ □□□□ □□□□□□□□.

*.□□□□□□ □□□□□□ :□□□□□□ □□□□□□ Dual-TEC ,□□□□ □□ □□□□□□ □□□□□□ □□□□□□ □□□□□□□□□□ ,□□□□□□□□ □□□□□□ □□□□□□ 40 :□□□□□□ □□□□ * .□□□□□□ □□□ □□□ □□□□ 24

*.□□□□□ □□□□ □□□□□□□□ □□□□□□.

*. □□□□ □□□□□□ □□□□ □□□□□□ 40,000,000□□□□□□□□□□ □"□□□□ □□ □□□□□□□□ □□□□□□□□ □□□□□□□□.

*. □□□□ ,□□□□□□ □□□□ ,□□□□□□ ,□□□□□□

*.□□□□□□□□ □□□□ □□□□ □□□□□□□□

*. □□□□ □□□□□□ 6 □□□□ '□□□□□□ 14.0 □□□□□□□□ □□□□□□□□ □□□□ □□□□.



What is diode laser hair removal?

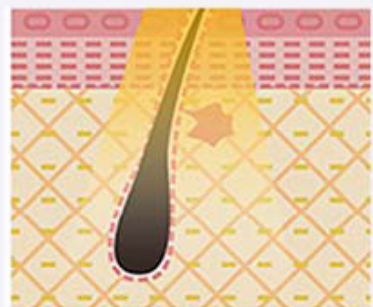
Alma soprano xl titanium Diode laser hair removal comes with 808nm wavelength laser stack or 755+808+1064 triple wavelength laser stack with semiconductors technology. They are assembled together to produce light for permanent hair removal/hair reduction/depilation/epilation treatment!



Emit a laser beam



The laser beam is absorbed by hair follicle melanin



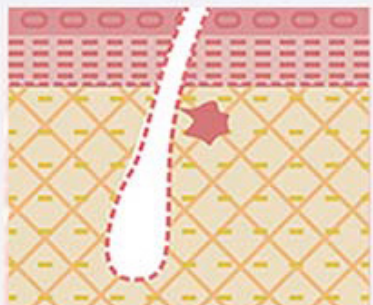
Different color hair has different ability to absorb light wave



After absorption, the laser energy will be converted into heat energy



Hair follicles and surrounding stem cells lose their activity and fall off



So reach hair removal effect



7558081064nm 12*20mm 12*35mm 12*20mm 12*35mm.

3 755nm 808nm 1064nm

755nm (12*20mm 12*35mm)

808nm (12*20mm 12*35mm)

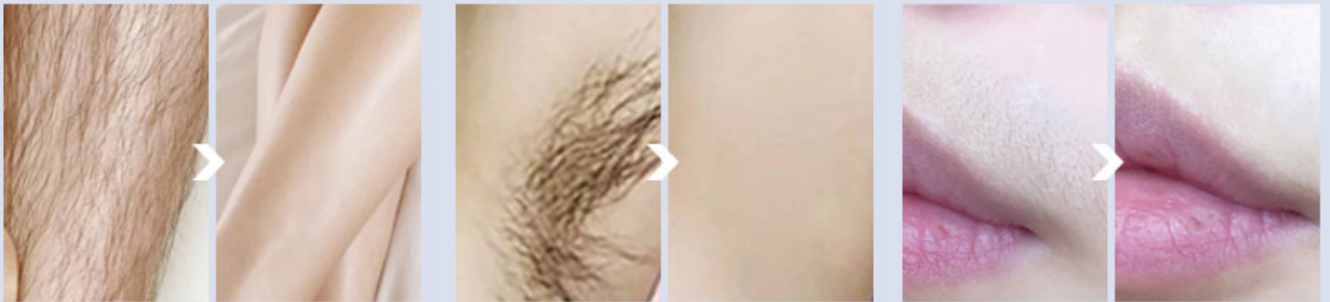
1064nm (12*20mm 12*35mm)

Treatment effect

Stuit to any color of skin



Before&After



... .. ,... .. :... ..
... ..

BEFORE AND AFTER TREATMENT

MAKE YOUR SKIN SILKY AND FULL OF CHARM!

