

Diode Laser

ice Hair removal



1200 0000 00000W 1800W Sopran Titanium

1. 000000 0000 0000 000 000000 ,0000 000000
0"0 36*12 0000 ,0"0 24*12 0000 0000 :000000 .2
1-10 000 :0000 000000 .3Hz, 00000000 00000000 000000 0000.
0000000 0000000
0000 000 000000 0000000
000000 00000 0000 ,0000 00000000 0000000



1800W



1200W



Super cooling effect, the handle temperature can be reduced to -25 °C

□□□□ □□□□ □□□□ □□□□ □□□□ Sopran Titanium

.□□□□□ □□□□□□ □□□□□ □□□□ □□□□ □□□□ ,□□□□ □□ □□□□□ □□□□□□ □□□□□ □□□□ □"□ 24*1.12 □□□□ □□□□□□□ □□□□□ ,□□ □□□□ ,□□□□ □□ □□□□□□ □□□□□□ □□□□□□ □□□□ □"□ 36*2.12.....

755 :□□□□ □□□□□ □□ □□□□nm 808nm 1064nm

- 755nm .□□□□ □□□□ □□□□ □□□□□ □□□□□
- 808nm .□□□□ □□□□□□ □□□□ □□□□□ □□□□□
- 1064nm □□□□ □□□□ □□□□ □□□□□ □□□□□.

Medical 1200W/1800W

50 Million Shots

USA / Germany Imported Laser Bar



755nm+808nm+1064nm



ALEX 755nm
For white skin
(fine, golden hair removal)



SPEED 810nm
For yellow neutral skin
(brown hair removal)



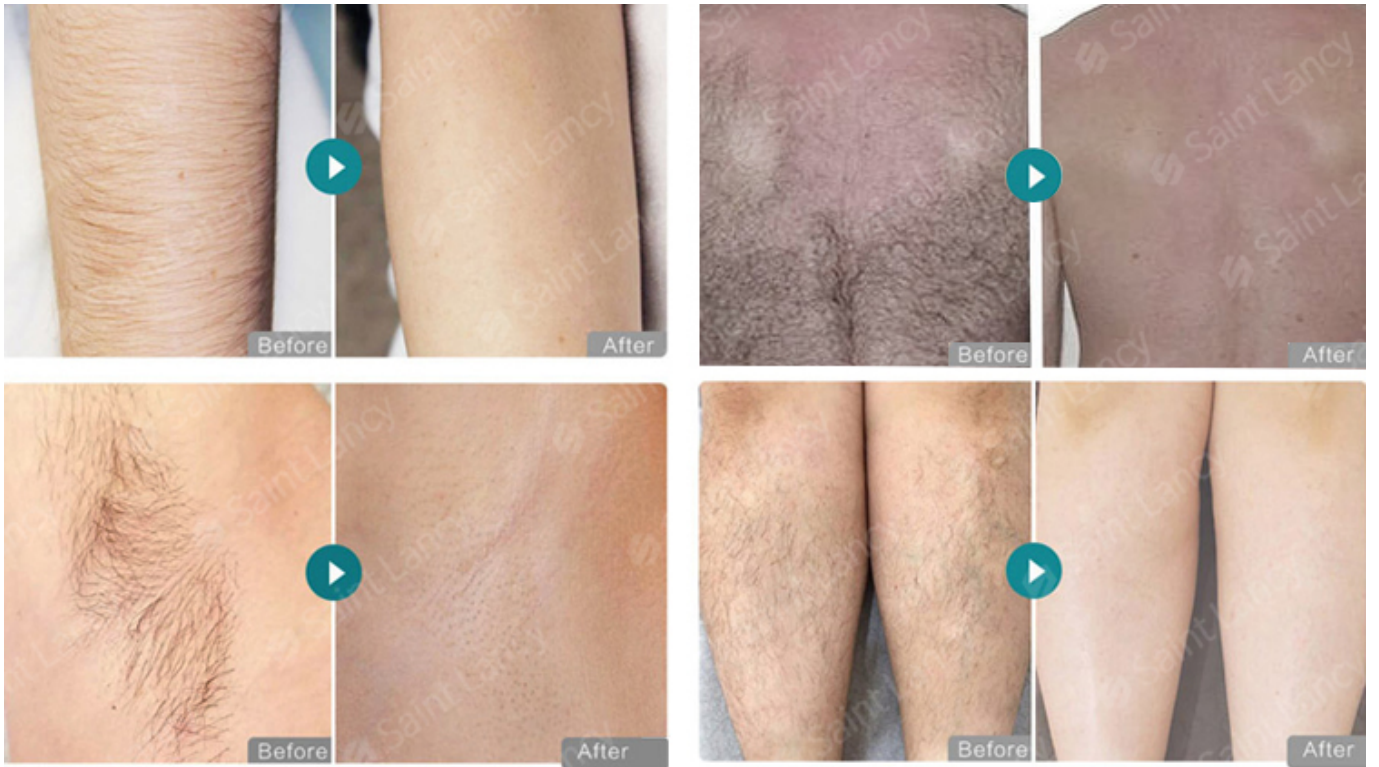
YAG 1064nm
For black skin
(black hair removal)

10 1200 W15bar 1800W

* () .

20-50 *

1064 808 755 *nm



000 00000

1) .0000 14 00000 000000 000 000 00000 :0000 0000

.000000 00 ,000 0000 00 000000 000000 :000 000000 (2

000000 (3 OEM: 000 000000000 00000 00 000 ,000000 00000000 000 00 000 000000 00 0000000 00000.