

CO2 laser treatment machine -FDA



1, CO2 laser treatment machine:

- 1) Skin resurfacing, wrinkles, scars;
- 2) Skin tightening, cellulite treatment, skin rejuvenation;
- 3) Skin resurfacing, wrinkles, scars, skin tightening, skin rejuvenation-striae gravidarum;
- 4) Skin resurfacing, nevus zygomaticus, skin tightening, skin rejuvenation, skin resurfacing, skin tightening, skin rejuvenation;
- 5) Skin resurfacing, wrinkles, scars;
- 6) Skin resurfacing, wrinkles, scars, skin tightening, skin rejuvenation;
- 7) Skin resurfacing, wrinkles, scars;
- 8) Skin resurfacing;
- 9) Skin resurfacing, wrinkles, scars, skin tightening, skin rejuvenation;

TREATMENT EFFECT T



before treatment



during treatment



after treatment



after 30days

Acne Scars



BEFORE



AFTER

Hypertrophic Scars



BEFORE



AFTER

Chicken Pox Scars



BEFORE



AFTER

Burn Scars



BEFORE



AFTER

Surgery Scars



BEFORE



AFTER

Accident Scars



BEFORE



AFTER

RF treatment effect



Acne Removal



Skin Rejuvenation



Skin lift



Wrinkle Removal



Speckle Removal

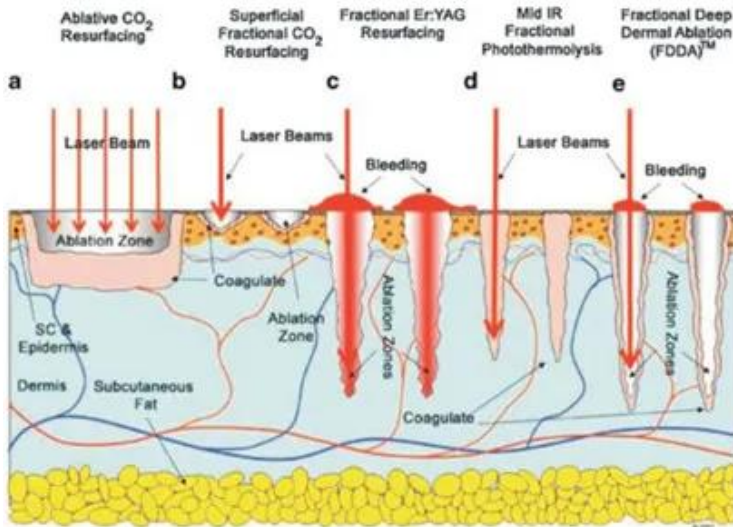
2, CO₂ 레이저 치료 효과:

CO₂ 레이저는 50-2000 마이크로미터 (μm) 파장의 레이저를 사용하여 피부 조직을 수축시키고 콜라겐 생성을 촉진합니다. 이는 피부 탄력을 증가시키고 주름을 줄여줍니다.

CO₂ 레이저는 또한 피부 표면을 매끄럽게 하고 색소 침착을 제거하는 데 효과적입니다. 이는 피부 톤을 개선하고 피부 결을 정돈합니다.

CO₂ 레이저 치료는 다음과 같은 효과를 기대할 수 있습니다:

WORKING PRINCIPLE



The CO₂ laser uses a unique head piece which tracks the CO₂ 10.6 μm wavelength light as it passes light through its optical lens to penetrate the skin. We can control the depth of the penetration from only a few micrometers in depth (only as deep as a few sheets of paper) to much deeper with tiny thermal channels. This will also determine the length of healing, the number of treatments and the cost. Each thermal channel creates a small micro-injury but does not significantly disturb or disrupt the surrounding tissue.

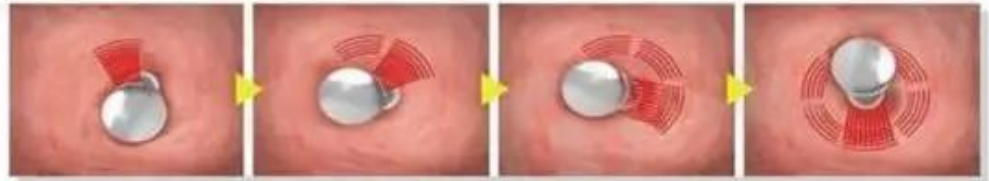
These microscopic injuries caused by the laser (around 15-20% of the treated area) are the beginning of the healing process. By creating thousands of these perforations underneath the skin, your epidermis layer starts to heal from the edge of these microscopic perforations very quickly. By healing so fast it remodels, tightens and stimulates the collagen, your skin tightens, which in turn smooths out lines, and significantly improves your skin's tone and complexion.



3, CO₂ laser treatment is a non-invasive procedure that uses a laser beam to create microscopic perforations in the skin. This stimulates the skin's natural healing process, which leads to collagen production and skin tightening. The procedure is safe and effective for improving skin texture and tone.



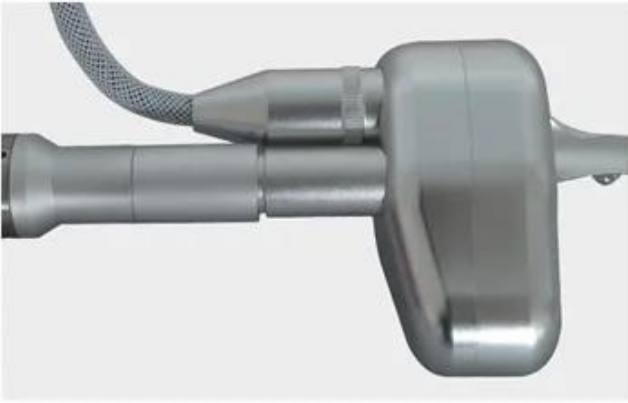
Use an articulate arm probe with automatically 360° rotation technology, producing in 50-70° C at a controlled depth inside the vaginal mucosa - stimulates collagen contraction, restructuring and regeneration; promotes collagen fiber proliferating, remodeling; improves vaginal mucosa microcirculation; increases cell secretion and dynamic reaction function; corrects PH value of vaginal inside;



Therapeutic schemes

Improves the inside environment; achieve female private parts to significant lasting firming, nourishing and restoring harmonious sexual life. The laser has a photo thermal heating effect on collagen in both the vaginal walls and the urethra which causes restructuring and regrowth of the collagen. This results in thickening and tightening of the vaginal walls and urethra to improve atrophy and prevent urine loss.

4, 二氧化碳 激光 阴道 治疗 方案:



German import scanning head

- **Longer life span**

Imported scanning heads generally use for 3 - 5 years, with low failure rate, more accurate scanning and long service life.

- **Strong energy, more accurate**

Strong energy, uniform light emission, more accurate scanning, lower failure rate and long service life.

- **Scanning accuracy**

The scanning rate of import is more accurate



Section 7 light guide arm

- **counter weight**

Light guide arm adopts counter weight design, which makes it more flexible to use and convenient to operate.

- **Aluminium material**

The light guide arm is made of high-grade aluminum, which has high stability and is lighter.

- **Tri - color optional**

Equipped with silver, red and blue light guide arms, it can meet different preferences of customers.

Five therapeutic heads

Equipped with scanning head * 1 / cutting head * 1 / private head * 3

- **Scanning head efficacy**

Tender skin/shrink pores/remove striae gravidarum and chloasma

- **Cutting head efficacy**

Removing sarcoma / nevus

- **Efficacy of private head**

Tighten vagina / tender vulva / tender vulva



scanning head

cutting head

private head

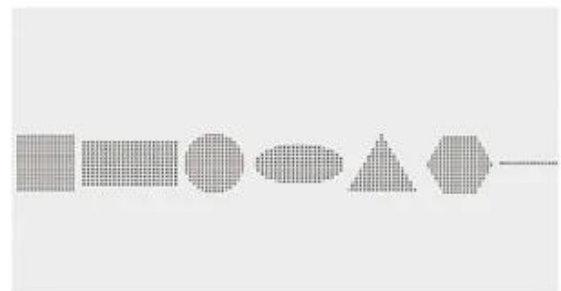


- **Trachea**

When working, gas is sprayed out, which has the functions of cooling, cooling and dust removal.



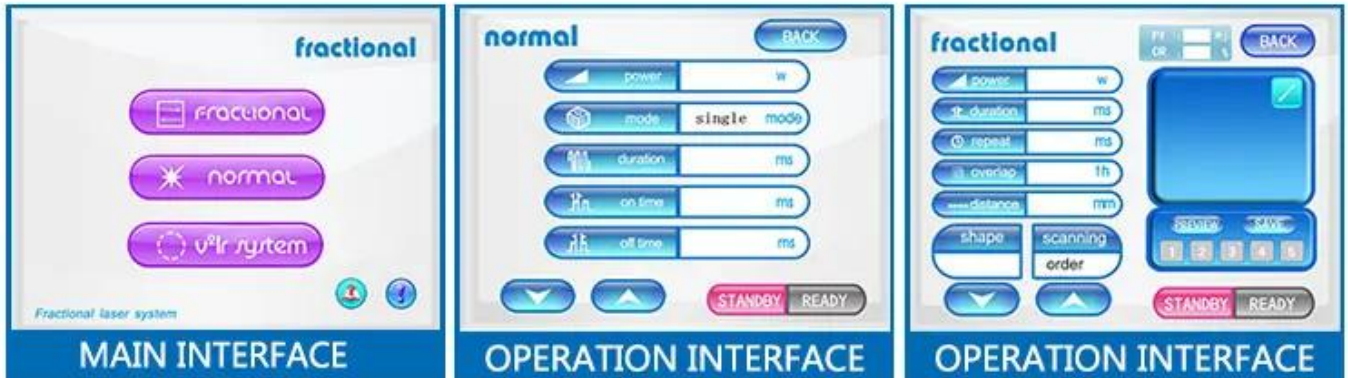
- **Adjustable dot shape and size**



- **Shape display**

2024 2025 2026 2027 2028 2029 2030 2031 2032 2033 2034 2035 2036 2037 2038 2039 2040 2041 2042 2043 2044 2045 2046 2047 2048 2049 2050 2051 2052 2053 2054 2055 2056 2057 2058 2059 2060 2061 2062 2063 2064 2065 2066 2067 2068 2069 2070 2071 2072 2073 2074 2075 2076 2077 2078 2079 2080 2081 2082 2083 2084 2085 2086 2087 2088 2089 2090 2091 2092 2093 2094 2095 2096 2097 2098 2099 2100

SCREEN IMAGE



Parameter	Power	10.6 W
	Mode	0.530 W
	Duration	1. 120 : 2000 μs 2. 500 : 200 : 2000 μs
Parameter	On time	1-30 : 0.1-10 W
	Off time	0.1-10 : 0.1-10 W
	Distance	400 : 1000 μm
	Spot size	0.3-1.0 mm
Parameter	Energy	1mj 100 μmj
	Spot size	f=50 μm
	Spot size	0.3 mm
	Spot size	0.5-20 mm
	Spot size / Spot size	0.01 1 mm
	Spot size	2-10 mm, 635 nm
	Spot size	0.01-10 mm

1) Parameter

1) Parameter

Parameter 2025 2026 2027 2028 2029 2030 2031 2032 2033 2034 2035 2036 2037 2038 2039 2040 2041 2042 2043 2044 2045 2046 2047 2048 2049 2050 2051 2052 2053 2054 2055 2056 2057 2058 2059 2060 2061 2062 2063 2064 2065 2066 2067 2068 2069 2070 2071 2072 2073 2074 2075 2076 2077 2078 2079 2080 2081 2082 2083 2084 2085 2086 2087 2088 2089 2090 2091 2092 2093 2094 2095 2096 2097 2098 2099 2100

2) Parameter

Parameter 2025 2026 2027 2028 2029 2030 2031 2032 2033 2034 2035 2036 2037 2038 2039 2040 2041 2042 2043 2044 2045 2046 2047 2048 2049 2050 2051 2052 2053 2054 2055 2056 2057 2058 2059 2060 2061 2062 2063 2064 2065 2066 2067 2068 2069 2070 2071 2072 2073 2074 2075 2076 2077 2078 2079 2080 2081 2082 2083 2084 2085 2086 2087 2088 2089 2090 2091 2092 2093 2094 2095 2096 2097 2098 2099 2100

3) Parameter OEM ODM Parameter

Parameter 2025 2026 2027 2028 2029 2030 2031 2032 2033 2034 2035 2036 2037 2038 2039 2040 2041 2042 2043 2044 2045 2046 2047 2048 2049 2050 2051 2052 2053 2054 2055 2056 2057 2058 2059 2060 2061 2062 2063 2064 2065 2066 2067 2068 2069 2070 2071 2072 2073 2074 2075 2076 2077 2078 2079 2080 2081 2082 2083 2084 2085 2086 2087 2088 2089 2090 2091 2092 2093 2094 2095 2096 2097 2098 2099 2100

4) 言語, Language, 言語

言語 言語 言語 言語 言語 言語 言語 言語

言語 言語 言語 言語 言語 言語 言語

言語 言語 言語 言語 言語 言語 言語

5) 言語

言語 3 言語 言語 言語

言語 言語 5 ~ 3 言語 言語 .言語 言語 言語 言語 DHL 言語 言語.

言語 言語

言語 言語	3-5 言語 言語 言語
言語 言語	言語 ,言語 言語 言語 DHL UPS TNT..
言語 言語	言語 言語 言語 言語

ABOUT SHIPPING

3-5 businessdays delivery

support air cargo & sea cargo as your option !



--言語 言語 言語

808 言語 nm (言語 ,言語 言語 TEC, 言語 言語)

言語 **CO2** (40W RF, 言語 言語)

980 言語 言語) 言語 言語)

Elight/IPL (7 言語 50*15 言語 言語 ,言語)

Nd yag (5 ,)

()

RF (RF , RF , RF)

SHR ()



BV-France's most authoritative certification body BV Group certification



TUV-Germany's most authoritative certification body Rheinland certification



SGS-Switzerland's most authoritative certification body SGS certification



Italy ECM Certification



ISO 13485

NQA medical system certification



()

1. () ?

Weifang Mingliang Development Co., Ltd () ,2005 ()

() , () -IT ()

() . () , () ()

5000M2 . () 100- ()

? () :2

..... .DHL, UPS, TNT, FEDEX... . ;

? :3
. 3-5

? :4
./

? :5
.

, (googletalk, MSN, yahoo...).

6: ?
T/T, .

? :7
.

.