

CO2

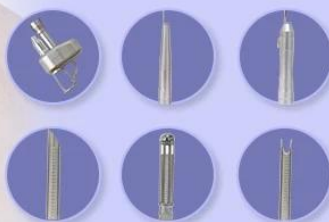


Fractional Laser

- ✓ skin rejuvenation
- ✓ remove scars
- ✓ get rid of stretch marks
- ✓ Remove acne scars
- ✓ Treatment of pigmented nevi
- ✓ private compact

CO2 FRACTIONAL LASER

- ✓ Six treatment heads
- ✓ Three treatment modes
- ✓ Professional medical beauty



Co2 fractional laser vaginal tightening

Latest





Collagen contraction and remodeling



Pigmentation removal



Skin tightening

up

Forehead

Eyelid / Brow

Nasolabial folds

Cheek

Double chin



Glabellum

Front face

Neck

down



Vaginal tightening



Scar removal



Stretch mark removal

SKIN RECONSTRUCTION



Five therapeutic heads

Equipped with scanning head * 1 / cutting head * 1 / private head * 3

- **Scanning head efficacy**

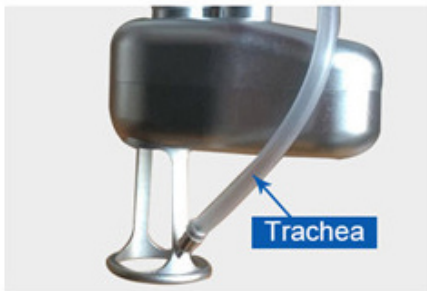
Tender skin/shrink pores/remove striae gravidarum and chloasma

- **Cutting head efficacy**

Removing sarcoma / nevus

- **Efficacy of private head**

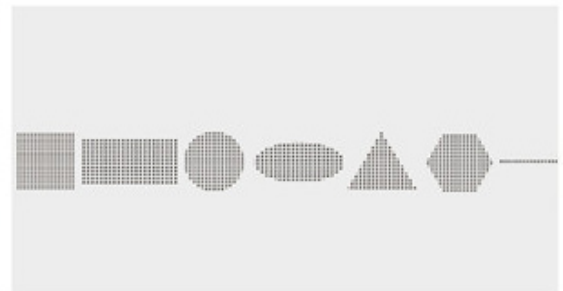
Tighten vagina / tender vulva / tender vulva



- **Trachea**



Adjustable dot shape and size



Shape display

Product Information

1. Laser resurfacing surgery 2. Laser wrinkle removal surgery 3. Laser scar removal surgery 4. Laser blepharoplasty 5. Other applications: Removal of pimented naevus, chloasmas, freckles, age pigments, warts, seborrheic keratosis, syringoma, acnes, milia, striae gravidarum; Pore shrinkage; Skin tightening; Laser hairtransplant; Laser breast augmentation and etc.

Function of CO2 fractional laser machine :



CO2 FRACTIONAL LASER CLEARLY DIFFERENT

BENEFITS



Shortest Pulse Duration,
Enabling High Peak Power



Improved ROI with Excellent Results in
Fewer Treatments



Unique Double Pulse Mode



Versatile Platform Enabling Multiple
Patient-Tailored Treatment Options



Supreme Feature-Set



I - VI Suitable for All Skin Types

CO2 FRACTIONAL LASER

vaginal tightening, skin resurfacing, scar removal

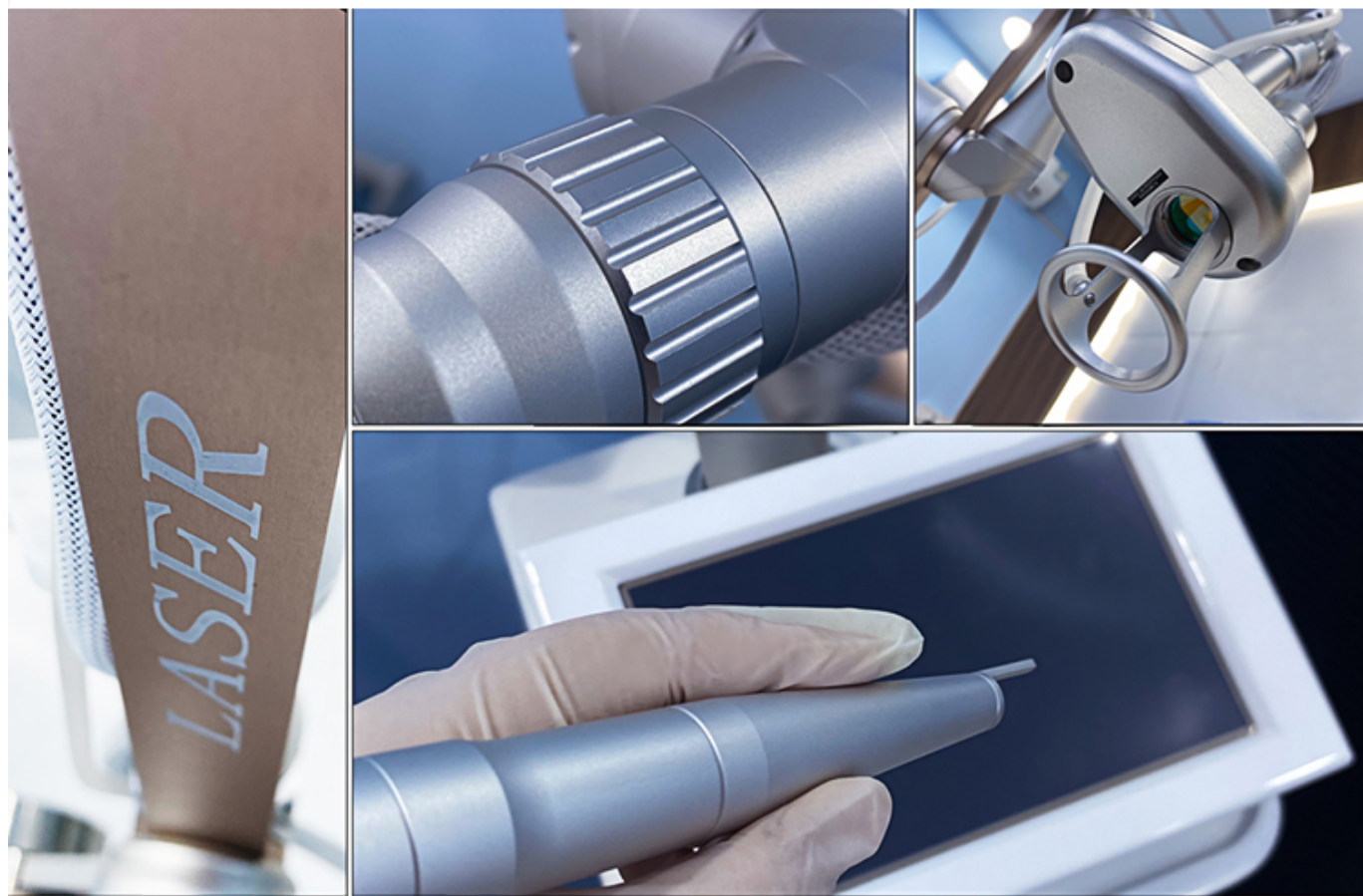


5 TREATMENT
HEADS



SHOW DETAILS

Pursue better in every detail

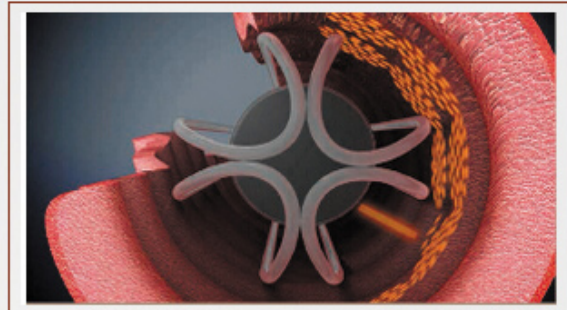


Work Theory

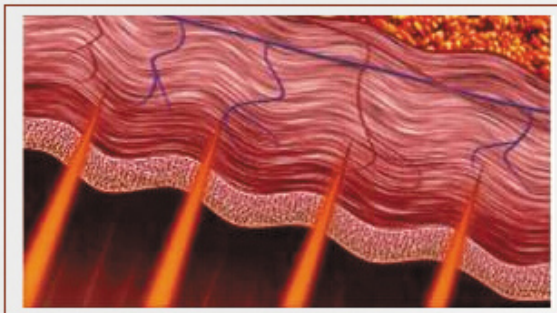
It concentrated thermal heating of the vaginal tissue inner layers induces collagen and elastine contraction and regeneration of these proteins in the longer term. These molecular signal activate the entire wound healing process of the body's local immune system. The treatment outcome is the complete remodeling of the vaginal tissue in addition to re-establishment of firm "young like" vaginal tissue embedded with string-like, thick and long collagen fibers.



1. Laser irradiation angle can be adjusted



2. Laser irradiation can be rotated 360 degrees

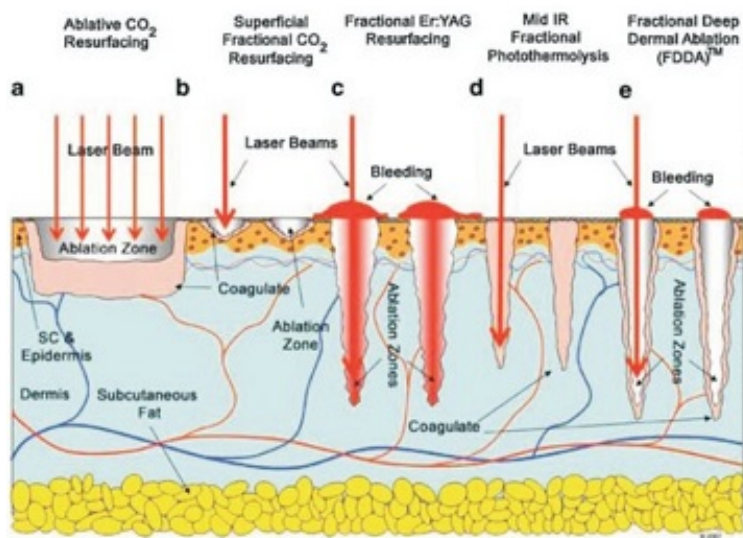


3. The area of the laser is compact edge contraction



4. vaginal walls shrink and tightening

WORKING PRINCIPLE



The CO₂ laser uses a unique head piece which tracks the CO₂ 10.6 μm wavelength light as it passes light through its optical lens to penetrate the skin. We can control the depth of the penetration from only a few micrometers in depth (only as deep as a few sheets of paper) to much deeper with tiny thermal channels. This will also determine the length of healing, the number of treatments and the cost. Each thermal channel creates a small micro-injury but does not significantly disturb or disrupt the surrounding tissue.

Treatment effect comparison



before treatment



during treatment



after treatment



after 30days

Acne Scars



Burn Scars



Hypertrophic Scars



Surgery Scars



Chicken Pox Scars



Accident Scars



Screen Display

- * 14 inch true color big touch screen
- * Super cool touch experience
- * 6 language for your choice, special language can be added
- * OEM service are accepted, such as adjust parameter, include energy/frequency/pulse width
- * 12 types output patterns

14 inch true touch screen, 6 kinds skin type for choice



14 inch 4K HD touch screen
One click start different function parameters
Easier system operation

Laser Type	Laser Co2 Vaginal Laser Vaginal Machine
Laser Wavelength	1060nm
Laser power	up to 40W(optional)
Light system	7 joint arms
Pulse Duration	100-5000us
Facula	single mode
Focussed diameter of the beam	0.25mm
Focal area	0.05mm ²
Output form	Ultra Pulse, fractional
Work Mode	Intermittent loading
Scanning Mode	Sequence, random, parallel (switchable)
Scanning Shapes	Triangle/square/rectangle/round/oval/hexagon/linear
Area of diagram	≤20mm*20mm
Interface Colorful Touch Screen	14 inch
Refrigerating system	Air-cooling, water-cooling
Input Power	AC 230V±10%,50HZ/ AC 110V±10% 60HZ
Spot size	≥0.2mm at the focus
Radiation time / Interval time	0.01 1 s
Aiming beam	635nm infrared ray
Power supply	110/220V+10% 60HZ 6A