



EXFU

CO2 laser beauty

Gynecology

Fractional

Cutting

3 in1 multifunctional
CO2 laser beauty equipment
power reaches 40w
professional medical level



Korea 7 joints light guiding arm

360°, smooth operation
100% korea import reliable quatity
7 joins articulated light guiding arm
Greatly reducing energy loss
Convenient and flexible in operation
Stylish appearance and excellient use feeling

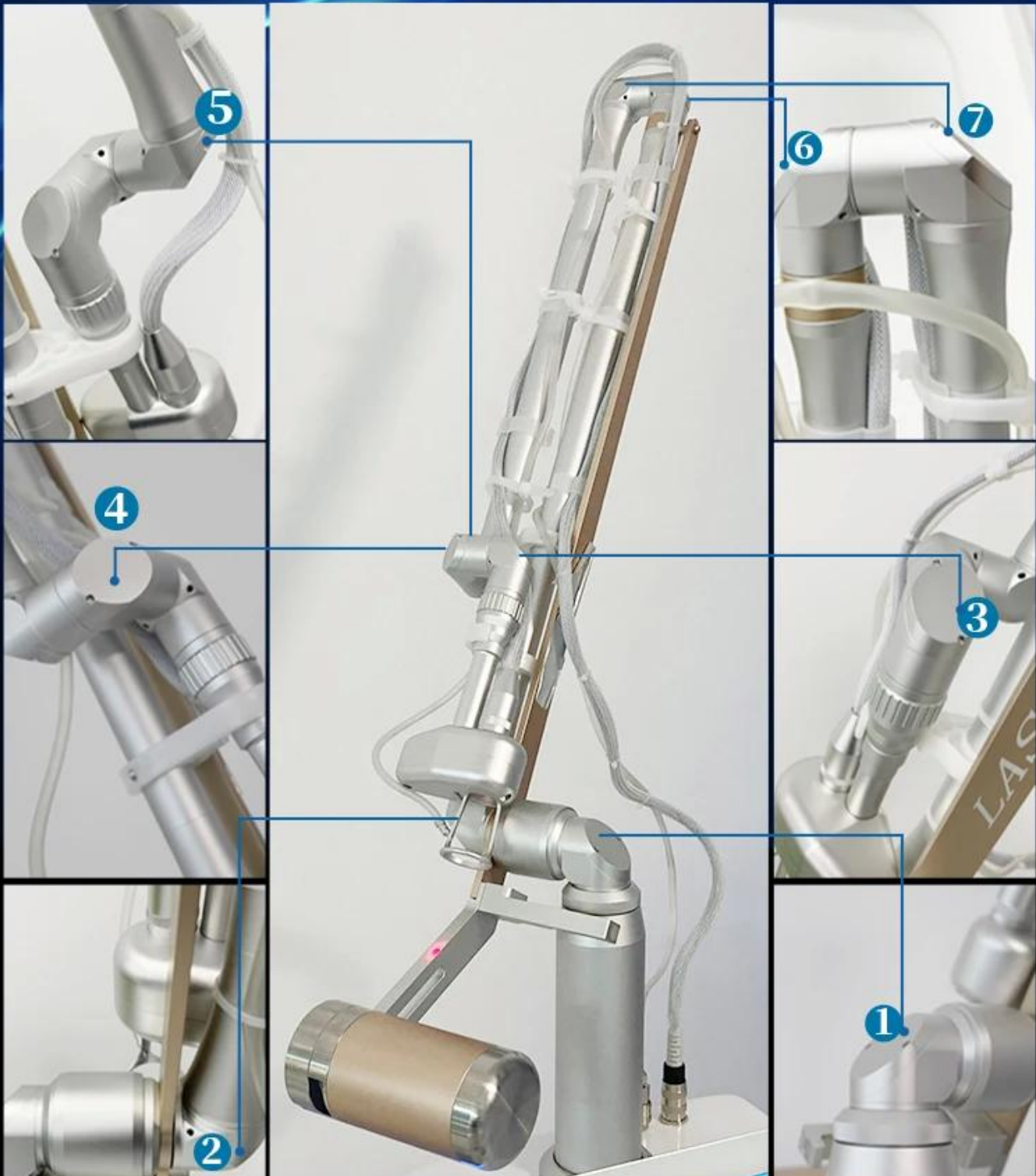


Multiple modes of operation Continuous,super pulse,fractional different Operation Modes.
Adjustable Focal spot diameter and interval are adjustable.
USA imports The best USA RF laser tube,imported from CONHERENT,stable
performance,high effective

Simple Easy to disassemble the handpiece and hang in the machine.

South Korea imported light guide arm

7 joints articulated light guiding arm



Mild No pigmentation and depigmentation of skin, not need extra consumable.
 Security protection Safety Protection with automatic alarm
 Shortcut Easy and fast treatment, no down time.
 Easy to use Jointed arm light conduct
 Wide application range Various spot volumes are suitable for different area of the body

PRODUCT EFFICACY

Skin renewal and regeneration	All colors tattoo removal
Remove acne and scars	Remove all kinds of wrinkles
Remove neplasms	Remove pigment: chloasmas Age spots blemishes, speckle, nevus, birth mark, etc
Treat telangiectasis	Sun damage recovery and skin renewing
Eliminates scrub	Pierce ears
Tighten and whiten skin, pore missing	Effective treatment with skin hydroponic, skin rough



Scann Mode
 Random Sen-
 quential Max dot
 distance
 (Adjustable dot
 shape and size)



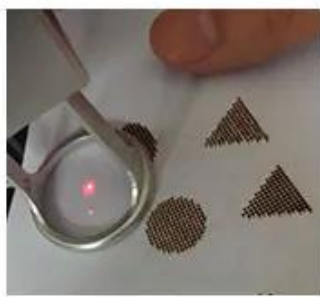
Cutting Mode
 CW
 Single
 Pulse

About Handles

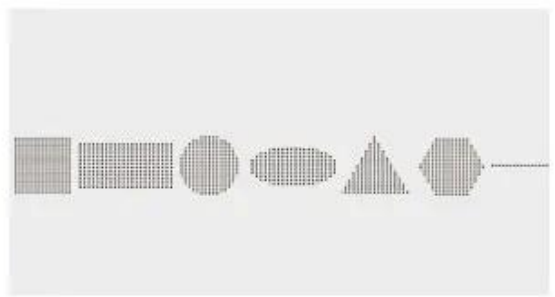


• Trachea

When working, gas is sprayed out, which has the functions of cooling, cooling and dust removal.



Adjustable dot shape and size



Shape display



• Rf tube

Good stability and high safety



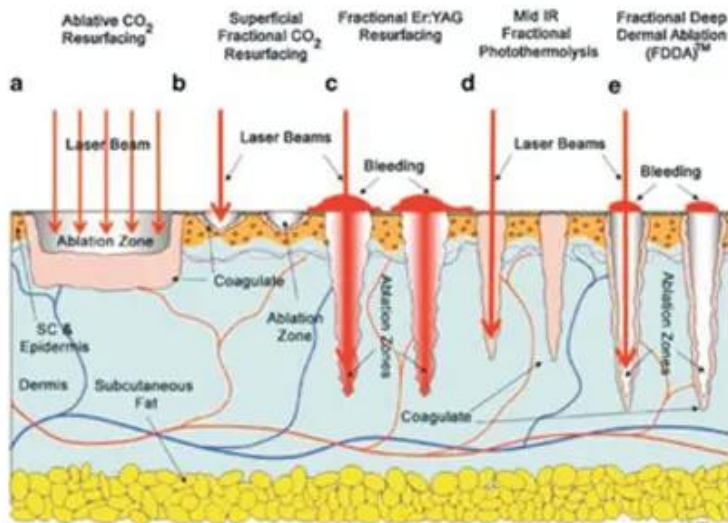
• Metal frame

In addition to the shell, the all-metal internal structure is firmer and has long service life.

Imported scanning heads generally use for 3 - 5 years, with low failure rate, more accurate scanning and long service life.

40w laser has high power and sufficient energy, and can work continuously for a long time. Strong energy, uniform light emission, more accurate scanning, lower failure rate and long service life.

WORKING PRINCIPLE



The CO₂ laser uses a unique head piece which tracks the CO₂ 10.6 μ m wavelength light as it passes light through its optical lens to penetrate the skin. We can control the depth of the penetration from only a few micrometers in depth (only as deep as a few sheets of paper) to much deeper with tiny thermal channels. This will also determine the length of healing, the number of treatments and the cost. Each thermal channel creates a small micro-injury but does not significantly disturb or disrupt the surrounding tissue.

These microscopic injuries caused by the laser (around 15-20% of the treated area) are the beginning of the healing process. By creating thousands of these perforations underneath the skin, your epidermis layer starts to heal from the edge of these microscopic perforations very quickly. By healing so fast it remodels, tightens and stimulates the collagen, your skin tightens, which in turn smooths out lines, and significantly improves your skin's tone and complexion.



Effect comparison

TREATMENT EFFECT T



before treatment



during treatment



after treatment



after 30days

Acne Scars



Burn Scars



Hypertrophic Scars



Surgery Scars



Chicken Pox Scars



Accident Scars



Screen Display



Simple and practical operation interface

Fractional cutting private multi-function multiple modes of operation
4 scan modes, sequence, random, continue and ultra pulse



14 inch true color big touch screen

Super cool touch Experience

6 language for your choice,Special language can be added

OEM service are accepted,such as adjust parameter,include energy/fre/time scope

12 types Output patterns.

Laser Type	Laser Co2 Vaginal Laser Vaginal Machine CO2 Fractional Laser
Laser Wavelength	1060nm
Laser power	up to 40W(optional)
Light system	7 joint arms
Pulse Duration	100-5000us
Facula	single mode
Focussed diameter of the beam	0.25mm
Focal area	0.05mm ²
Output form	Ultra Pulse, fractional
Work Mode	Intermittent loading
Scanning Mode	Sequence, random, parallel (switchable)
Scanning Shapes	Triangle/square/rectangle/round/oval/hexagon/linear
Area of diagram	≤20mm*20mm
Interface Colorful Touch Screen	14 inch
Refrigerating system	Air-cooling, water-cooling
Input Power	AC 230V±10%,50HZ/ AC 110V±10% 60HZ
Spot size	≥0.2mm at the focus
Radiation time / Interval time	0.01 1 s
Aiming beam	635nm infrared ray
Power supply	110/220V+10% 60HZ 6A