



1.3 waves 1064nm + Diode 808nm + 755nm, 3 in 1 all skin type can be used
 High power: NEW 1000W/ 1200W /1600W handle for options

2.Big spot size 12*20mm, 12*35mm face & body hair removal solution!

3.Cooling system: Unique Dual- TEC cooling system, most effective to ensure machine work all day, 24hr no down time.

4.Long life: double life support guarantee

Handle of diode laser hair removal machine:



Different spot size Handle color optional



Safe Use On All Skin Type

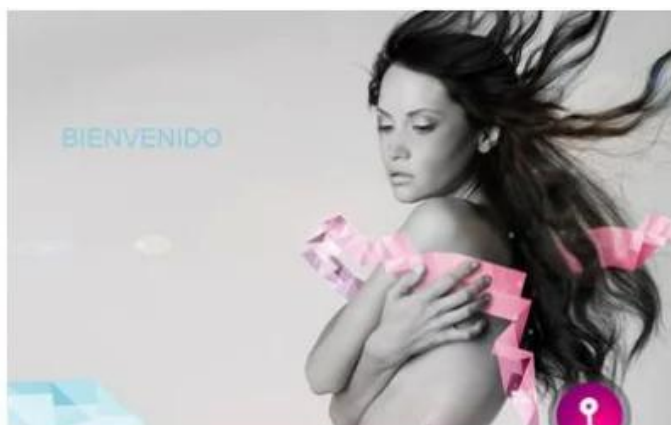
Speed Diode 808nm for yellow skin

Long Pulse 1064nm for darker skin

Alex 755nm for light skin

Software & Program

1. Male & femal, 6 body parts, 6 skin types setting smart software
2. 6 language options, your native language can be added
3. OEM program service available(logo/system...)





Before and After

We help you
Goodbye to the embarrassment



Before

After



Before

After



Before

After



Before

After