



Diode Laser

Permanent hair removal

[Understand more](#)



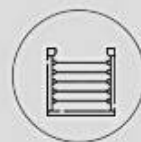
14 inch
Screen Size



3000W
Input power



1-10HZ
Frequency



755nm 808nm 1064nm
Wavelength

>>Machine 14-inch large screen

>>3000W machine power to ensure the treatment effect

>>1-10Hz fast frequency and 15x25mm spot size ensures faster, smooth and effective treatment

>>808 single wave or 755nm/808nm/1064nm perfect triple wavelengths
>>Easy to operate Data Base system,can do the treatment by man mode and women mode,also different body part.To ensure a safe parameter for new operator
>> Long life time More than 40 millions shots gold laser diode module, anti high temperature.



350g lightweight **handle**, more ergonomic

Available in **black or white**



The handle weighs only 350g, which is convenient for treatment

>>12 pieces or 16 pieces Germany Dilas original laser bars,600/800W/1200W power is capable to meet all demands of hair removal on the whole body;

>>1-10Hz fast frequency and 15x25mm spot size ensures faster, smooth and effective treatment;

>Super sapphire touch cooling system ensures painless and comfortable treatment

Hair removal principle

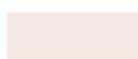
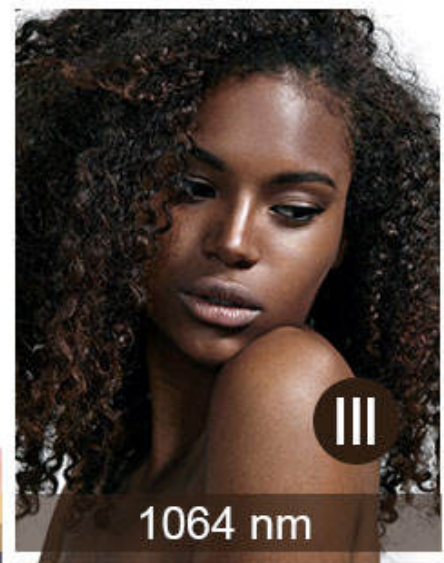
Make Your Beauty Business More Easier



The laser selectively acts on the melanin in the hair follicle, destroying the hair-growing area

Natural hair loss, prevent regeneration, and achieve the purpose of hair removal

Hair removal also stimulates collagen regeneration, shrinks pores and makes skin firm and smooth



755 nm for white skin (fine, golden hair removal);



808 nm for yellow neutral skin (brown hair removal);



1064 nm for black skin (black hair removal)

Handle Long life time 20-40 millions shots

Speed 808nm: Golden standard wavelength for all hair types

Alex 755nm: Specific effective for blonde hair, fine hair

Long Pulse 1064nm: Specific effective for dark, tanned skin best quality ipl shr opt laser/ nd yag /alexandrite laser hair removal machine price

Export 102 countries+
102 countries, 60,000+ customers

