

Co2 fractional laser vaginal tightening

Latest





Collagen contraction and remodeling



Pigmentation removal



Skin tightening

up

Forehead

Eyelid / Brow

Nasolabial folds

Cheek

Double chin



Glabellum

Front face

Neck



Vaginal tightening



Scar removal



Stretch mark removal

down

SKIN RECONSTRUCTION



Five therapeutic heads

Equipped with scanning head * 1 / cutting head * 1 / private head * 3

- **Scanning head efficacy**

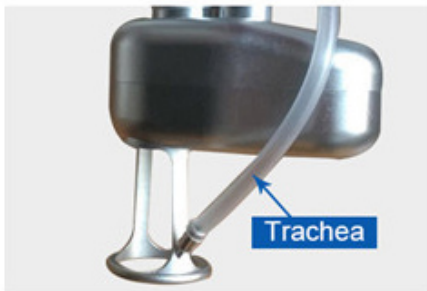
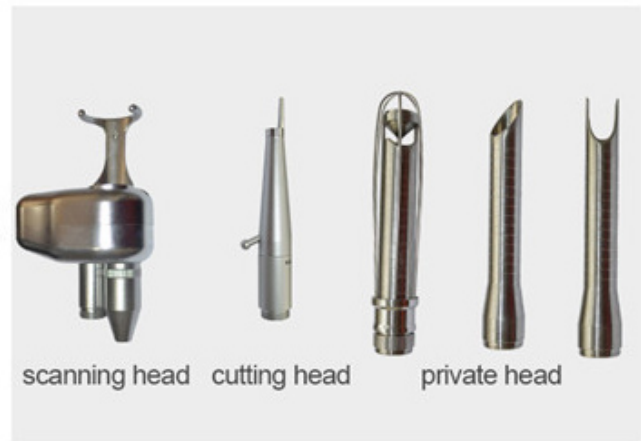
Tender skin/shrink pores/remove striae gravidarum and chloasma

- **Cutting head efficacy**

Removing sarcoma / nevus

- **Efficacy of private head**

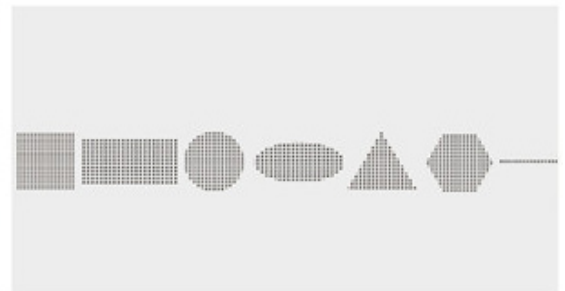
Tighten vagina / tender vulva / tender vulva



- **Trachea**



- **Adjustable dot shape and size**



- **Shape display**

informação do produto

Função da máquina de laser fracionário de CO2:

1. Cirurgia de recapeamento a laser 2. Cirurgia de remoção de rugas a laser 3. Cirurgia de remoção de cicatriz a laser 4. Blefaroplastia a laser 5. Outras aplicações: Remoção de nevo pigmentado, cloasmas, sardas, pigmentos da idade, verrugas, queratose seborreica, siringoma, acnes, milia, estrias gravídico; Encolhimento dos poros; Endurecimento da pele; Transplante capilar a laser; Aumento de mama a laser e etc.



CO2 FRACTIONAL LASER CLEARLY DIFFERENT

BENEFITS



Shortest Pulse Duration,
Enabling High Peak Power



Improved ROI with Excellent Results in
Fewer Treatments



Unique Double Pulse Mode



Versatile Platform Enabling Multiple
Patient-Tailored Treatment Options



Supreme Feature-Set



Suitable for All Skin Types

CO2 FRACTIONAL LASER

vaginal tightening, skin resurfacing, scar removal

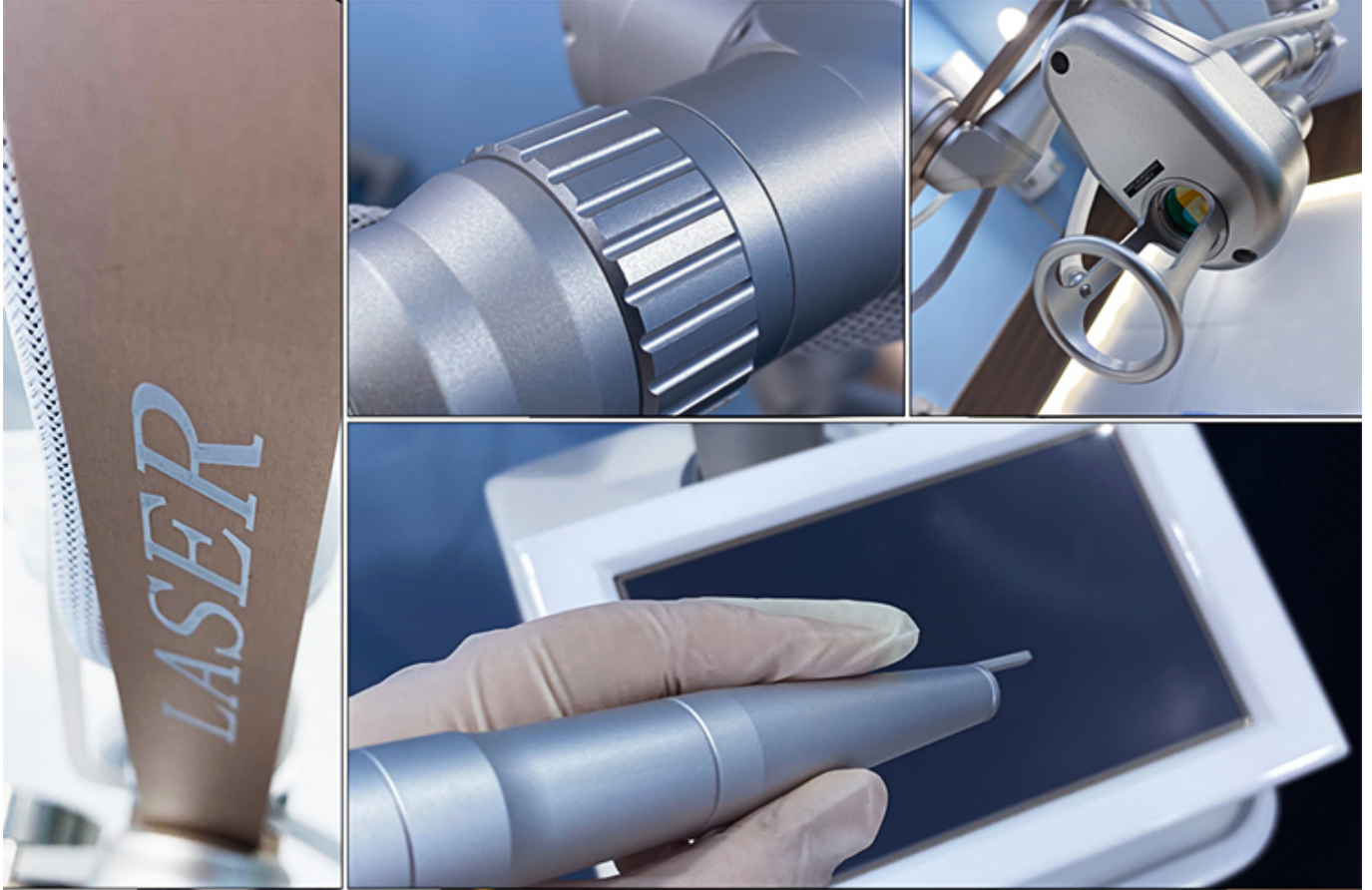


5 TREATMENT
HEADS



SHOW DETAILS

Pursue better in every detail

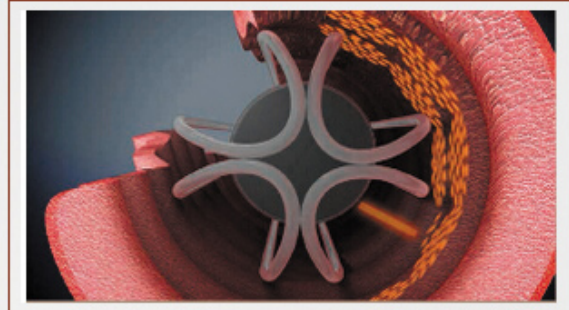


Work Theory

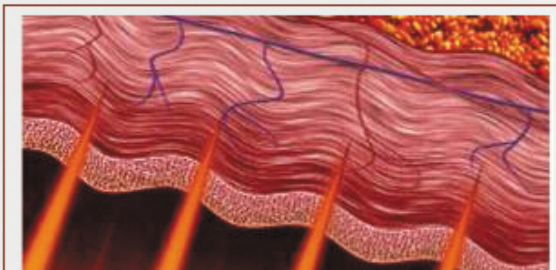
It concentrated thermal heating of the vaginal tissue inner layers induces collagen and elastine contraction and regeneration of these proteins in the longer term. These molecular signal activate the entire wound healing process of the body's local immune system. The treatment outcome is the complete remodeling of the vaginal tissue in addition to re-establishment of firm "young like" vaginal tissue embedded with string-like, thick and long collagen fibers.



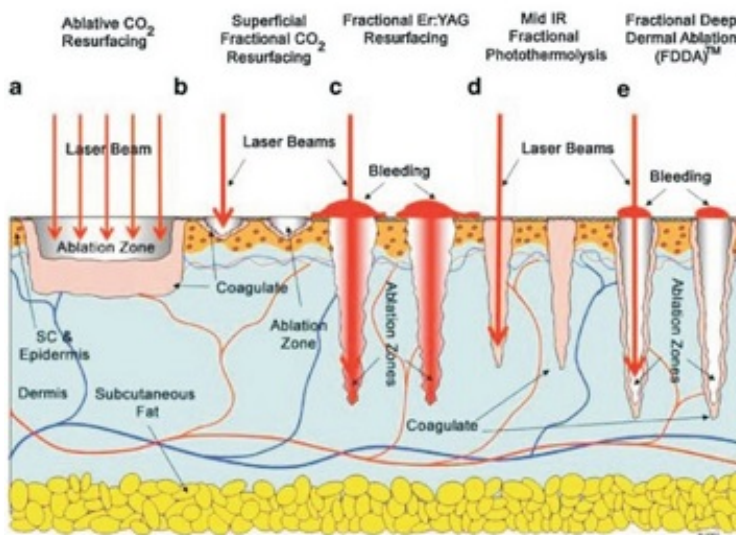
1. Laser irradiation angle can be adjusted



2. Laser irradiation can be rotated 360 degrees



WORKING PRINCIPLE



The CO₂ laser uses a unique head piece which tracks the CO₂ 10.6 μm wavelength light as it passes light through its optical lens to penetrate the skin. We can control the depth of the penetration from only a few micrometers in depth (only as deep as a few sheets of paper) to much deeper with tiny thermal channels. This will also determine the length of healing, the number of treatments and the cost. Each thermal channel creates a small micro-injury but does not significantly disturb or disrupt the surrounding tissue.

Treatment effect comparison



before treatment



during treatment



after treatment



after 30days

Acne Scars



BEFORE



AFTER

Burn Scars



BEFORE



AFTER

Hypertrophic Scars



BEFORE



AFTER

Surgery Scars



BEFORE



AFTER

Chicken Pox Scars



BEFORE



AFTER

Accident Scars



BEFORE



AFTER

Tela de exibição

Tela sensível ao toque verdadeira de 14 polegadas, 6 tipos de tipo de pele para escolha

* Tela sensível ao toque grande de 14 polegadas em cores verdadeiras

* Experiência de toque super legal

* 6 idiomas para sua escolha, idioma especial pode ser adicionado

* Serviços OEM são aceitos, como ajuste de parâmetro, incluem energia/frequência/largura de pulso

* 12 tipos de padrões de saída



14 inch 4K HD touch screen
One click start different function parameters
Easier system operation

Tipo de laser	Laser Co2 Vaginal Laser Vaginal Machine
Comprimento de onda do laser	1060nm
potência do laser	até 40W (opcional)
sistema de luz	7 braços articulados
Duração do pulso	100-5000us
Facula	modo único
Diâmetro focalizado do feixe	0,25 mm
área focal	0,05mm ²
formulário de saída	Ultra Pulso, fracionário
Modo de trabalho	Carregamento intermitente
Modo de digitalização	Sequência, aleatória, paralela (comutável)
Digitalizando Formas	Triângulo/quadrado/retângulo/redondo/oval/hexágono/linear
Área do diagrama	≤20mm*20mm
Interface Tela sensível ao toque colorida	14 polegadas
Sistema de refrigeração	Resfriamento a ar, resfriamento a água
Potência de entrada	CA 230V±10%,50HZ/ CA 110V±10% 60HZ
Tamanho do ponto	≥0,2 mm no foco
Tempo de radiação / Tempo de intervalo	0,01 1 s
Feixe de mira	raio infravermelho 635nm
Fonte de energia	110/220V10% 60HZ 6A