



Sync to machine

SMART SCREEN CONTROLLER

Intelligent | Interconnected | Efficient

[Home](#) | [Food](#) | [Drugs](#) | [Medical Devices](#) | [Radiation-Emitting Products](#) | [Vaccines, Blood & Biologics](#) | [Animal & Veterinary](#) | [Cosmetics](#) | [Tobacco Products](#)

[Follow FDA](#) | [En Español](#)

510(k) Premarket Notification

[FDA Home](#) | [Medical Devices](#) | [Databases](#)

[CDRH SuperSearch](#)

[510\(k\)](#) | [DeNovo](#) | [Registration & Listing](#) | [Adverse Events](#) | [Recalls](#) | [PMA](#) | [HDE](#) | [Classification](#) | [Standards](#)
[CFR Title 21](#) | [Radiation-Emitting Products](#) | [X-Ray Assembler](#) | [Medsun Reports](#) | [CLIA](#) | [TPLC](#)

[Back To Search Results](#)

Device Classification Name	Powered Laser Surgical Instrument
510(K) Number	K200525
Device Name	Medical Diode Laser Hair Removal System
Applicant	Weifang Mingliang Electronics CO., LTD No.13426, Yuqing Street, High-Tech District Weifang, CN 261000
Applicant Contact	Li Mingliang
Correspondent	Beijing Believe-Med Technology Service Co., Ltd. Rm. 912, Building#15, XiYueHui, No.5, YiHe North Rd., FangShan District Beijing, CN 102401
Correspondent Contact	Ray Wang
Regulation Number	878.4810
Classification Product Code	GEX
Date Received	03/02/2020
Decision Date	05/27/2020
Decision	Substantially Equivalent (SESE)
Regulation Medical Specialty	General & Plastic Surgery
510k Review Panel	General & Plastic Surgery
Type	Traditional
Reviewed By Third Party	No
Combination Product	No

Page Last Updated: 06/01/2020

1. Tecnologia avançada: tecnologia de sinterização de estanho dourado,
2. alças: barras de laser alemanha/eua, 10bar, 1000 w. 12 bar, 1200w maior potência para

uma depilação mais rápida e melhor, depilação real indolor e permanente, com resultados óbvios. Depilação real indolor e permanente, com resultados óbvios.

3. Tratamento rápido: Nig spot size 10*20mm / 15*25mm / 12*38mm, frequência 1-10Hz, maior eficiência

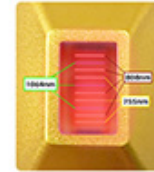
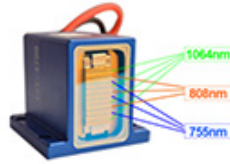
4. Trabalho contínuo: condensador TEC ar água sistema de resfriamento semiconductor, pode realmente controlar a constante de temperatura da água a 22 ~ 24 °C, certifique-se de que a máquina funcione continuamente por 24 horas sem parar, mesmo no verão sem ar-condicionado.



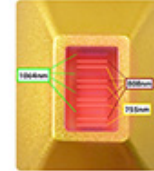
High-quality laser bars imported from Germany

1000/1200/1600ww high power

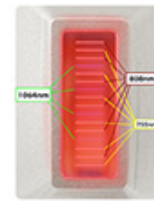
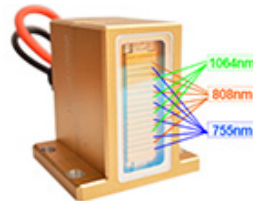
Fast hair removal



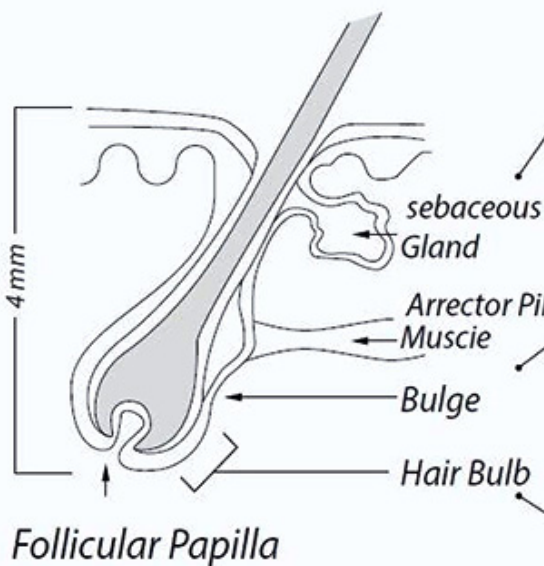
10bar
1000W



12bar
1200W



16bar
1600W



755nm

More powerful energy absorption by the melanin chromophore, making it ideal for the widest range of hair types and color
- especially light-colored and thin hair

808/810nm

Deep penetration of the hair follicle with high average power with high repetition rate for fast treatment. moderate melanin absorption level making it safe for darker skin types.
ideal for treating the arms, legs, cheeks and beard.

1064nm

low melanin absorption, focused solution for darker skin types. Offers the deepest penetration of the hair follicle, embedded hair in areas as the scalp, armpit, and pubic area.

»»Efeito Super Cooling:

Temperatura de safira-5 ~ 3 °C. Reduza efetivamente o doloroso no tratamento e faça

»»Itália Bomba d'água:

Mais melhor para o círculo de água do laser, retire o calor, maior tempo de vida.

»»Dois filtros de água:

Duas resões de troca de qualidade alimentar, podem garantir a qualidade da água para circulação



755nm



808nm



1064nm

